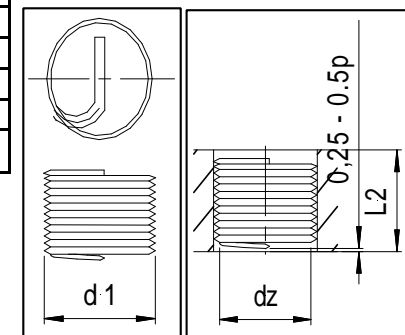
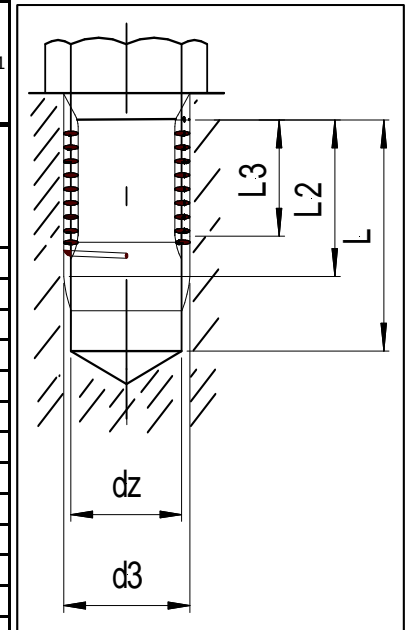


DE=	EN=	PT=	VN=
Gewindeinsatz Blatt 1/4	Heli-Coil Sheet 1/4	Heli-Coil Folha 1/4	Heli-Coil Bảng 1/4

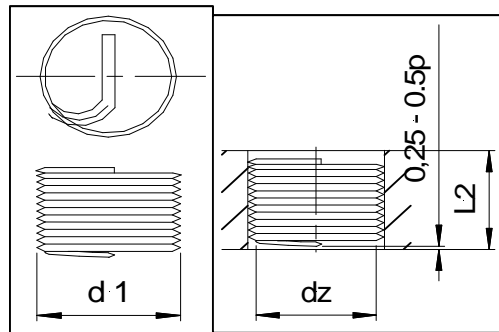
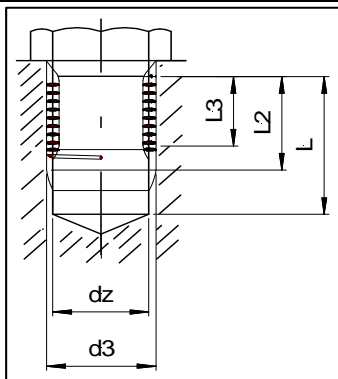
de=	Nenn- und Schrauben \emptyset																				
en=	Nominal and bolts \emptyset		M 2,5	M 3	M 3,5	M 4	M 5	M 6	M 7	M 8	M 8 x1	M 9	M 9 x1	M 10	M10x1	M10x1,2	M 11	M11x1			
pt=	Nominal e parafusos \emptyset																				
vn=	Danh nghĩa và đinh vít \emptyset																				
de=	Steigung P																				
en=	Slope P		0,45	0,50	0,60	0,70	0,80	1,00	1,00	1,25	1,00	1,25	1,00	1,50	1,00	1,25	1,50	1,00			
pt=	Chumbo P																				
vn=	Dẫn P																				
	min.		D1	2,60	3,20	3,70	4,20	5,20	6,30	7,30	8,40	8,30	9,40	9,30	10,50	10,25	10,40	11,50	11,25		
	dz 2)		t1/1d	4,3	5,0	5,9	6,8	8,2	10,0	11,0	13,0	12,0	14,0	13,0	16,0	14,0	15,0	17,0	15,0		
	d3		max		t1/1.5d	5,6	6,5	7,7	8,8	10,7	13,0	14,5	17,0	16,0	18,5	17,5	21,0	19,0	20,0	22,5	20,5
Nennlängen Nominal length Comprimentos nominais Danh định độ dài	1 d	l1 min.	t1/2d	6,8	8,0	9,4	10,8	13,2	16,0	18,0	21,0	20,0	23,0	22,0	26,0	24,0	25,0	28,0	26,0		
		l2	t2/1d	2,5	3,0	3,5	4,0	5,0	6,0	7,0	8,0	8,0	9,0	9,0	10,0	10,0	10,0	11,0	11,0		
		l3	t2/1.5d	3,75	4,5	5,25	6,0	7,5	9,0	10,5	12,0	12,0	13,5	13,5	15,0	15,0	15,0	16,5	16,5		
		N	t2/2d	5,0	6,0	7,0	8,0	10,0	12,0	14,0	16,0	16,0	18,0	18,0	20,0	20,0	20,0	22,0	22,0		
		+	l2/1d	2,1	2,5	2,9	3,3	4,2	5,0	6,0	6,8	7,0	7,8	8,0	8,5	9,0	8,8	9,5	10,0		
	1,5 d	l1 min.	l2/1.5d	3,3	4,0	4,7	5,3	6,7	8,0	9,5	10,8	11,0	12,3	12,5	13,5	14,0	13,8	15,0	15,5		
		l2	l2/2d	4,6	5,5	6,4	7,3	9,2	11,0	13,0	14,8	15,0	16,8	17,0	18,5	19,0	18,8	20,5	21,0		
		l3	t3/1d	1,8	2,3	2,6	3,0	3,8	4,5	5,5	6,2	6,5	7,2	7,5	7,8	8,5	8,2	8,8	9,5		
		N	t3/1.5d	3,1	3,8	4,4	5,0	6,3	7,5	9,0	10,2	10,5	11,7	12,0	12,8	13,5	13,2	14,3	15,0		
		+	t3/2d	4,3	5,3	6,1	7,0	8,8	10,5	12,5	14,2	14,5	16,2	16,5	17,8	18,5	18,2	19,8	20,5		
	2 d	l1 min.																			
		l2																			
		l3																			
		N																			
*)																					



gez/erfasst	hpw	Datum: 2009	education project	Gewindeinsatz	translate/en_iwhp/p_cu/vn_ha	orig:Brütsch Rügger
Aenderung:	an	Datum: 24.06.2015	WIAP KFKOK	Heli-Coil	r1	datei Wi_8_f_19_i36_r1_Helic_new_gesamt
Aenderung:	control 2	Data:	Safenwil Schweiz	spear 2	www.wiap.ch	idee of / from HPW

DE=	EN=	PT=	VN=
Gewindeinsatz Blatt 2/4	Heli-Coil Sheet 2/4	Heli-Coil Folha 2/4	Heli-Coil Bảng 2/4

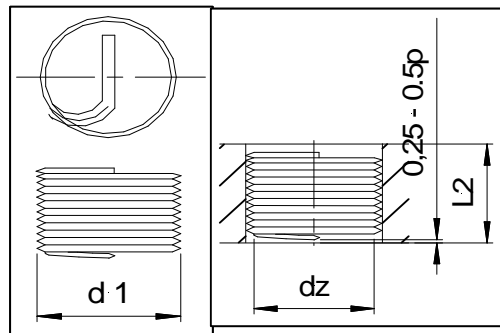
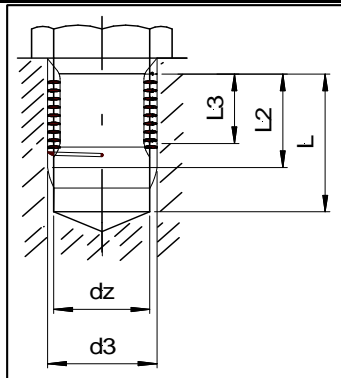
de=	Nenn- und Schrauben \emptyset																				
en=	Nominal and bolts \emptyset																				
pt=	Nominal e parafusos \emptyset																				
vn=	Danh nghĩa và đĩnh vít \emptyset																				
de=	Bz.	M 12	M12x1	M12x1,2	M12x1,5	M 14	M14x1	M14x1,5	M 15	M15x1,5	M 16	M16x1,5	M 18	M18x1,5	M18x2	M 20	M20x1,5	M20x2	M 22		
de=	Steigung P																				
en=	Slope P																				
pt=	Chumbo P																				
vn=	Dẫn P																				
d1	max.	P	1,75	1,00	1,25	1,50	2,00	1,00	1,50	2,00	1,50	2,00	1,50	2,50	1,50	2,00	2,50	1,50	2,00	2,50	
	min.	D1	12,50	12,25	12,25	12,50	14,50	14,25	14,50	15,50	15,50	16,50	16,50	18,75	18,50	18,50	2,75	20,50	20,50	22,75	
dz 2)	t1/1d	19,0	16,0	17,0	18,0	22,0	18,0	20,0	23,0	21,0	24,0	22,0	28,0	24,0	26,0	30,0	26,0	28,0	32,0		
d3	max	t1/1.5d	25,0	22	23,0	24,0	29,0	25,0	27,0	30,5	28,5	32,0	30	37,0	33,0	35,0	40,0	36,0	38,0	43,0	
Nennlängen Nominal length Comprimentos nominais Danh đĩnh độ dài	1 d	l1 min.	t1/2d	31,0	28,0	29,0	30,0	36,0	32,0	34,0	38,0	36,0	40,0	38,0	46,0	42,0	44,0	50,0	46,0	48,0	54,0
		l2	t2/1d	12,0	12,0	12,0	12,0	14,0	14,0	14,0	15,0	15,0	16,0	16,0	18,0	18,0	18,0	20,0	20,0	20,0	22,0
		l3	t2/1.5d	18,0	18,0	18,0	18,0	21,0	21,0	21,0	22,5	22,5	24,0	24	27,0	27,0	27,0	30,0	30,0	30,0	33,0
		N	t2/2d	24,0	24,0	24,0	24,0	28,0	28,0	28,0	30,0	30,0	32,0	32,0	36,0	36,0	36,0	40,0	40,0	40,0	44,0
	1,5 d	+	l2/1d	10,3	11,0	10,8	10,5	12,0	13,0	12,5	13,0	13,5	14,0	14,5	15,5	16,5	16,0	17,5	18,5	18,0	19,5
		l1 min.	l2/1.5d	16,3	17,0	16,8	16,5	19,0	20,0	19,5	20,5	21,0	22,0	22,5	24,5	25,5	25,0	27,5	28,5	28,0	30,5
		l2	l2/2d	22,3	23,0	22,8	22,5	26,0	27,0	26,5	28,0	28,5	30,0	30,5	33,5	34,5	34,0	37,5	38,5	38,0	41,5
		l3	t3/1d	9,4	10,5	10,2	9,8	11,1	12,5	11,8	12,1	12,8	13,1	13,8	14,3	15,8	15,1	16,3	17,8	17,1	18,3
	2 d	N	t3/1.5d	15,4	16,5	16,2	15,8	18,1	19,5	18,8	19,6	20,3	21,1	21,8	23,3	24,6	24,1	26,3	27,8	27,1	29,3
		+	t3/2d	21,4	22,5	22,2	21,8	25,1	26,5	25,8	27,1	27,8	29,1	29,8	32,3	33,8	33,1	36,3	37,8	37,1	40,3
		l1 min.																			
		l2																			
		l3																			
		N																			
		*)																			



gez/erfasst	hpw	Datum: 2009	education project	Gewindeinsatz	translate/en_iwhp/p_cu/vn_ha	orign:Brütsch Rügger
Aenderung:	an	Datum: 24.06.2015	WIAP KFKOK	Heli-Coil	r1	datei Wi_8_f_19_i36_r1_Helic_new_gesamt
Aenderung:	control 2	Data:	Safenwil Schweiz	spear 2	www.wiap.ch	idee of / from HPW

DE=	EN=	PT=	VN=
Gewindeinsatz Blatt 3/4	Heli-Coil Sheet 3/4	Heli-Coil Folha 3/4	Heli-Coil Bảng 3/4

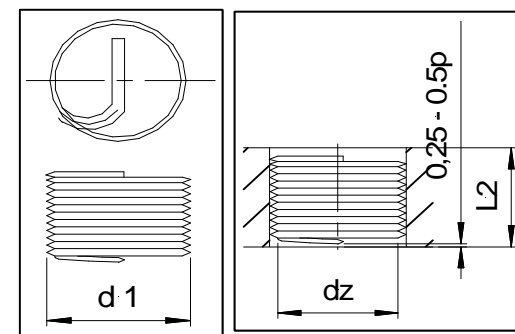
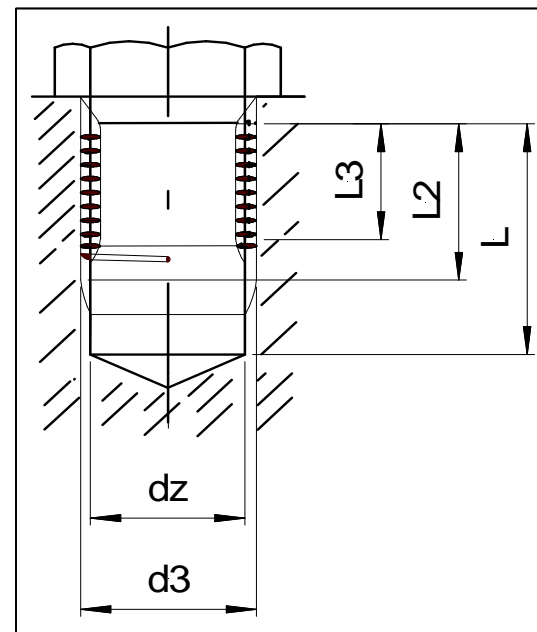
de=	Nenn- und Schrauben \emptyset																				
en=	Nominal and bolts \emptyset																				
pt=	Nominal e parafusos \emptyset																				
vn=	Danh nghĩa và đĩnh vít \emptyset																				
de=	Bz.	M22x1,5	M22x2	M 24	M24x1,5	M24x2	M26x1,5	M 27	M27x1,5	M27x2	M28x1,5	M 30	M30x1,5	M30x2	M 33	M33x2	M 36	M36x2	M36x3		
de=	Steigung P																				
en=	Slope P																				
pt=	Chumbo P																				
vn=	Dẫn P																				
d1	max.	P	1,5	2,00	3,00	1,50	2,00	1,50	3,00	1,50	2,00	1,50	3,50	1,50	2,00	3,50	2,00	4,00	2,00	3,00	
	min.	D1	22,50	22,50	24,75	24,50	24,50	26,50	27,75	27,50	27,50	28,50	31,00	30,50	30,50	34,00	33,50	37,00	36,50	37,00	
dz 2)		t1/1d	28,0	30,0	36,0	30,0	32,0	32,0	39,0	33,0	35,0	34,0	44,0	36,0	38,0	47,0	41,0	52,0	44,0	48,0	
d3	max	t1/1.5d	39,0	41,0	48,0	42,0	44,0	45,0	52,5	46,5	48,5	48,0	59	51,0	53,0	63,5	57,5	70,0	62,0	66,0	
Nennlängen Nominal length Comprimentos nominais Danh đĩnh độ dài	1 d	l1 min.	-	52,0	60,0	-	56,0	-	66,0	-	-	-	74,0	-	-	80,0	-	88,0	-	-	
		l2	t2/1d	22,0	22,0	24,0	24,0	24,0	26,0	27,0	27,0	27,0	28,0	30,0	30,0	30,0	33,0	33,0	36,0	36,0	36,0
		l3	t2/1.5d	33,0	33,0	36,0	36,0	36,0	39,0	40,5	40,5	40,5	42,0	45	45,0	45,0	49,5	49,5	54,0	54,0	54,0
		N	t2/2d	-	44,0	48,0	-	48,0	-	54,0	-	-	-	60,0	-	-	66,0	-	72,0	-	-
	1,5 d	+	l2/1d	20,5	20,0	21,0	22,5	22,0	24,5	24,0	25,5	25,0	26,5	26,5	28,5	28,0	29,5	31,0	32,0	34,0	33,0
		l1 min.	l2/1.5d	31,5	31,0	33,0	34,5	34,0	37,5	37,5	39	38,5	40,5	41,5	43,5	43,0	46,0	47,5	50,0	52,0	51,0
		l2	l2/2d	-	42,0	45,0	-	46,0	-	51,0	-	-	-	56,5	-	-	62,5	-	68,0	-	-
		l3	t3/1d	19,8	19,1	19,6	21,8	21,1	23,8	22,6	24,8	24,1	25,8	24,8	27,6	27,1	27,8	30,1	30,1	33,1	31,6
	2 d	N	t3/1.5d	30,8	30,1	31,6	33,8	33,1	36,8	36,1	38,3	37,6	39,8	39,8	42,8	42,1	44,3	46,6	48,1	51,1	49,6
		+	t3/2d	-	40,1	43,6	-	45,1	-	49,6	-	-	-	54,8	-	-	60,8	-	66,1	-	-
		l1 min.																			
		l2																			
	l3																				
	N																				
DE=	EN=	PT=	VN=	*)																	



gez/erfasst	hpw	Datum: 2009	education project	Gewindeinsatz	translate/en_iwhp/p_cu/vn_ha	orig:Brütsch Rügger
Aenderung:	an	Datum: 24.06.2015	WIAP KFKOK	Heli-Coil	r1	datei Wi_8_f_19_i36_r1_Helic_new_gesamt
Aenderung:	control 2	Data:	Safenwil Schweiz	spear 2	www.wiap.ch	idee of / from HPW

DE=	EN=	PT=	VN=
Gewindeinsatz Blatt 4/4	Heli-Coil Sheet 4/4	Heli-Coil Folha 4/4	Heli-Coil Bảng 4/4

de=	Nenn- und Schrauben \emptyset												
en=	Nominal and bolts \emptyset												
pt=	Nominal e parafusos \emptyset												
vn=	Danh nghĩa và đinh vít \emptyset												
de=	Bz.	M 39	M39x2	M 42	M42x2	M42x3	M42x4	M 45	M45x2	M45x3			
de=	Steigung P												
en=	Slope P												
pt=	Chumbo P												
vn=	Dẫn P												
d1	max.	P	4	2,00	4,50	2,00	3,00	4,00	4,50	2,00	3,00		
	min.	D1	40,00	39,50	43,00	42,50	43,00	43,00	46,00	45,50	46,00		
dz 2)		t1/1d	55,0	47,0	60,0	50,0	54,0	58,0	63,0	53,0	57,0		
d3	max	t1/1.5d	74,5	66,5	81,0	71,0	75,0	79,0	85,5	5,5	79,5		
Nenniängen Nominal length Comprimentos nominais Danh đinh độ dài	1 d	l1 min.	t1/2d	94,0	-	102,0	-	-	-	100,0	-	-	
		l2	t2/1d	39,0	39,0	42,0	42,0	42,0	42,0	45,0	45,0	45,0	
		l3	t2/1.5d	58,5	58,5	63,0	AP-KFK	63,0	63,0	67,5	67,5	67,5	
		N	t2/2d	78,0	-	84,0	-	-	-	90,0	-	-	
		+	l2/1d	35,0	37,0	37,5	40,0	39,00	38,0	40,5	43,0	42,0	
	1,5 d	l1 min.	l2/1.5d	54,5	56,5	58,5	61	60,00	59,0	63,0	65,5	64,5	
		l2	l2/2d	74	-	79,5	-	-	-	85,5	-	-	
		l3	t3/1d	33,1	36,1	35,4	39,1	37,60	36,1	38,4	42,1	40,6	
		N	t3/1.5d	52,6	55,6	56,4	60,1	58,60	57,1	60,9	64,6	63,1	
		+	t3/2d	72,1	-	77,4	-	-	-	83,4	-	-	
	2 d	l1 min.											
		l2											
l3													
N													
*)													



de=	Zündkerzengewinde	
en=	Spark plug thread	
pt=	Spark Plug fio	
vn=	Spark sợi cắm	
	M14x1,25	14,25
	M18x1,5	18,5

gez/erfasst	hpw	Datum: 2009	education project	Gewindeinsatz	translate/en_iwhp/p_cu/vn_ha	orign:Brütsch Rügger
Aenderung:	an	Datum: 24.06.2015	WIAP KFKOK	Heli-Coil	r1	datei Wi_8_f_19_i36_r1_Helic_new_gesamt
Aenderung:	control 2	Data:	Safenwil Schweiz	spear 2	www.wiap.ch	idee of / from HPW